

LE HAVRE SEINE-ESTUARY

ENTER THE CHEMICAL VALLEY

Refinery | Polymers | Biochemistry | Plastics | Bioplastics



**LE HAVRE
DEVELOPPEMENT**

Le Havre region
economic
development
agency

Eau glacée

5 REASONS why choosing Le Havre

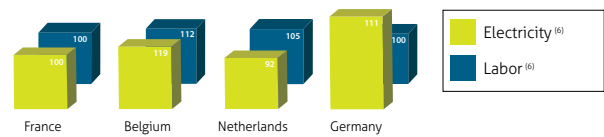


1 A LEADING CHEMICAL INDUSTRIAL PLATFORM IN EUROPE

- ▶ **1st French chemical platform**, with 5,275 kilotons products per year, for a normative added-value of € 1.38 billion ⁽¹⁾
- ▶ **1st French petrochemical complex**, with 24.3 million tons of crude oil processed per year ⁽²⁾
- ▶ 40% of European production of additives and mineral oils ⁽³⁾
- ▶ Largest European production area for fertilisers ⁽³⁾
- ▶ 25% of French production of olefins, 50% of French production of plastics and elastomers ⁽³⁾
- ▶ 50% of French imports of nitrogen products ⁽³⁾
- ▶ Normandy, 2nd French region in medical chemistry ⁽⁴⁾
- ▶ Plastics: **€ 2.3 billion turnover**, close to 200 companies in Normandy ⁽⁵⁾

2 A COMPETITIVE AREA FOR THE NORTH OF EUROPE

- ▶ **Competitive** labour and electricity costs



- ▶ A 52 km industrial water network, **5 to 10 times less expensive** than conventional water network
- ▶ A shared steam network of 4 km at a competitive cost (additional 10 km in project)
- ▶ Sebindex, **one of Europe's largest** industrial waste incineration plant, with energy recovery
- ▶ Le Havre industrial port area eligible for **Regional Development Grant (AFR)**, allowing to benefit from setting-up aids or tax exemptions ⁽⁷⁾
- ▶ **Revitalization funds** available for set-up projects ⁽⁷⁾

3 INFRASTRUCTURES TO SERVE INDUSTRIES

- ▶ Expertise for chemicals traffics: **8 million tons** in 2015
- ▶ **5,6 millions m³** capacity for liquid bulks
- ▶ **90 000 m³** of storage capacity for polymers
- ▶ 35 km of docks, 200 km of rail and road networks within the Industrial Port Area
- ▶ Network of pipelines within the Industrial Port Zone and to Paris region
- ▶ Very high voltage electricity grid (90 – 225 – 400 kV) and natural gas (low and high pressure)
- ▶ Pan-European multimodal transport network (short-sea, river, rail)
- ▶ A **smooth highway flow** to Paris and Northern Europe
- ▶ **Connections to more than 600 ports**, via 75 regular shipping lines

4 ACKNOWLEDGED EXPERTISE OF INDUSTRIAL RISK

- ▶ Average time for processing and issuing prior operating permit **between 8 and 12 months**
- ▶ **Technological Risk Prevention Plan** in the area: 16 Seveso sites, about 200 businesses and 10,000 jobs
- ▶ **SYNERZIP-LH**, industrial association managing industrial risks and other synergies
- ▶ Single European port **certified ISO 28000** (security)
- ▶ An IT tool dedicated to the **management of hazardous materials**: TIMAD

5 INNOVATIONS FOR SUSTAINABLE CHEMISTRY

- ▶ **A territory of experimentation** for industrial CO₂ capture: Sedibex - Insa pilot, EDF demonstrator (ECCSEL network)
- ▶ R & D centers dedicated to the **development of new products** : Total (fuels and lubricants) – Chevron (additives) – PPG Coating (paints and varnishes), C2MC (complex matrices)
- ▶ Estener, **1st French production unit** of advanced biodiesel based on animal fats residues
- ▶ **Osilub**, a patented process for the re-refining of waste mineral oils
- ▶ Total Fluids, **1st plant** in France to obtain the **ISCC+ label** for its range of biodegradable and sustainable fluids BioLife
- ▶ HAROPA-Port du Havre awarded "**Best Green Sea Port 2016**"



They have chosen Le Havre



- (1) PIPAME / DGE / UIC
- (2) French Union of Chemical Industries
- (3) HAROPA
- (4) Union des Industries Chimiques
- (5) French Federation of Plastics and Composites
- (6) Eurostat
- (7) According to eligibility



THE DEVELOPMENT ACCELERATOR FOR YOUR BUSINESS IN LE HAVRE AND ITS REGION

As the economic development agency of Le Havre region, Le Havre Développement carries out market research, advises and supports companies – VSEs, SMEs/SMLs and groups, other than the retail trade – in their projects for setup, investment and development in Le Havre and its region.

What we can do to facilitate your project

- ▶ Assist you in finding premises or land
- ▶ Identify potential partners, clients and service providers and foster contacts
- ▶ Facilitate recruitment, welcome and support newly-arrived employees
- ▶ Simplify formalities with the authorities
- ▶ Find financial partners

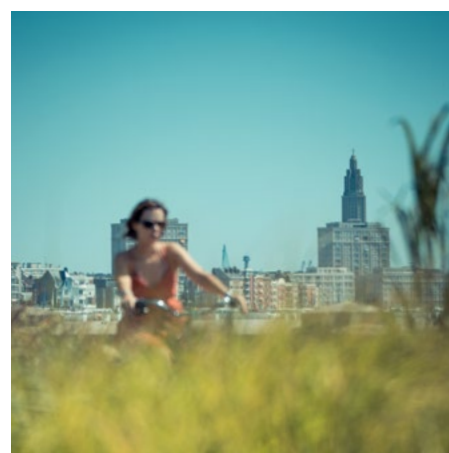
Contact-us !

Le Havre Développement
19 rue Georges Braque
76600 Le Havre - FRANCE
Tel: +33 (0)2 76 40 23 20

Frédéric BERNARD
Industrial Business developer
f.bernard@havre-developpement.com



www.havre-developpement.com



Le Havre Développement partners

